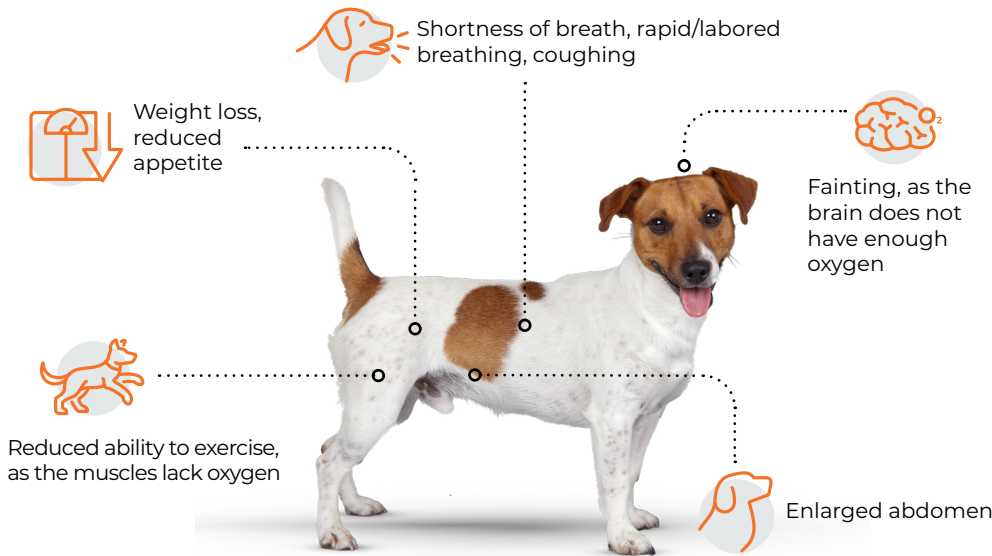


Help your heart dog

What are the signs of heart failure?



Mitral Valve Disease and Heart Failure

A diseased mitral valve does not close properly. This allows blood to leak backward, in the wrong direction.

Mitral valve disease causes the heart to weaken. The weakened heart does not pump as efficiently.

This causes fluid to build up in the lungs. When a dog reaches this stage, "heart failure" has occurred.

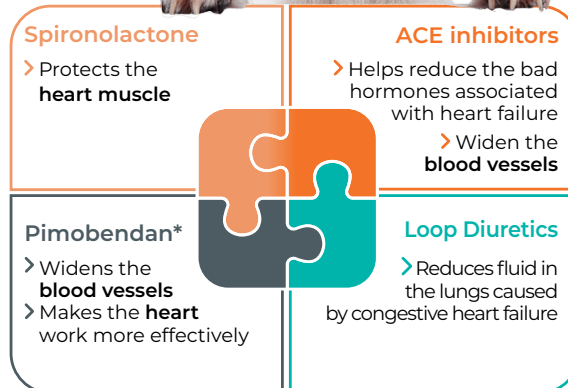
The most common cause of heart failure in dogs is mitral valve disease.

How to manage heart failure

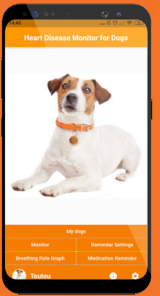
Heart failure management helps the heart work more efficiently.

Multiple medications are needed to reduce your dogs symptoms and manage the disease.

** In 2019, the ACVIM published new guidelines recommending a quadruple therapy approach for the treatment of CHF in dogs. The safety and efficacy of CARDALISTM has not been investigated with pimobendan.



Monitor your dog at home



Respiratory rate



The normal breathing rate during rest or sleep is usually around **20-30 breaths per minute**.

If this starts to increase, it may be a sign that the heart condition is worsening and veterinary advice is needed.



Scan this QR code to download the Cardalis app and easily measure your pet's respiratory rate. Through the app, you can calculate the breaths per minute and share them with your veterinarian.



Follow the directions in the app to setup accounts to monitor all your heart dogs.



Caring for your heart dog at home



Avoid **intense physical effort**



Beware of **excessive weight**. Obesity causes extra fatigue for the body and the heart



Avoid **excessively salty food**. Excessively salty food contributes to the build up of fluid in the lungs.



Protect from **heat and stress**



Provide access to water and frequent urination opportunities

**Loop diuretics, like furosemide, will cause your dog to urinate and drink more.





This summary contains important information about CARDALIS™ (spironolactone and benazepril HCl chewable tablets). Please speak with your veterinarian and read this information before starting your dog on this prescription medication.

What is CARDALIS™?

CARDALIS™ is a combination drug containing spironolactone and benazepril hydrochloride prescribed to slow the progression of signs associated with congestive heart failure in your dog.

CARDALIS™ is a tablet that is flavored, chewable, and formulated for once daily administration to make your day more convenient.

Giving with food may reduce side effects.

How Does CARDALIS™ Work?

CARDALIS™ is a prescription drug to slow the progression of clinical signs associated with congestive heart failure in your dog. CARDALIS™ will be prescribed for your dog in conjunction with another drug that reduces water retention.

The ingredient spironolactone blocks the mechanisms associated with retention of water and scarring of the heart.

The ingredient benazepril hydrochloride inhibits mechanisms associated with narrowing of blood vessels and heart damage.

What are the possible side effects that may occur with CARDALIS™?

The most common side effects were lack of appetite, vomiting, lethargy, diarrhea, and poor function of the kidneys. Giving CARDALIS™ with food helped to minimize many of these effects.

To report suspected side effects please call Ceva Animal Health at 1-800-999-0297.

What dogs should not take CARDALIS™?

Your veterinarian may not prescribe CARDALIS™ for your dog if it:

- Has kidney disease and is taking medication to control pain for conditions such as arthritis
- Has Addison's disease, high potassium or low sodium blood levels
- Has known sensitivities to the ingredients in CARDALIS™

What should I do if my dog ingests more CARDALIS™ than prescribed?

Call your veterinarian immediately.

What else should I know about CARDALIS™?

CARDALIS™ is not for use in humans.

You should store CARDALIS™ to prevent reach by children and pets to stop accidental ingestion and overdosing.

If CARDALIS™ is ingested by a person, please contact a physician.

CARDALIS™ should be stored at room temperature in the original container.

below left intentionally blank
