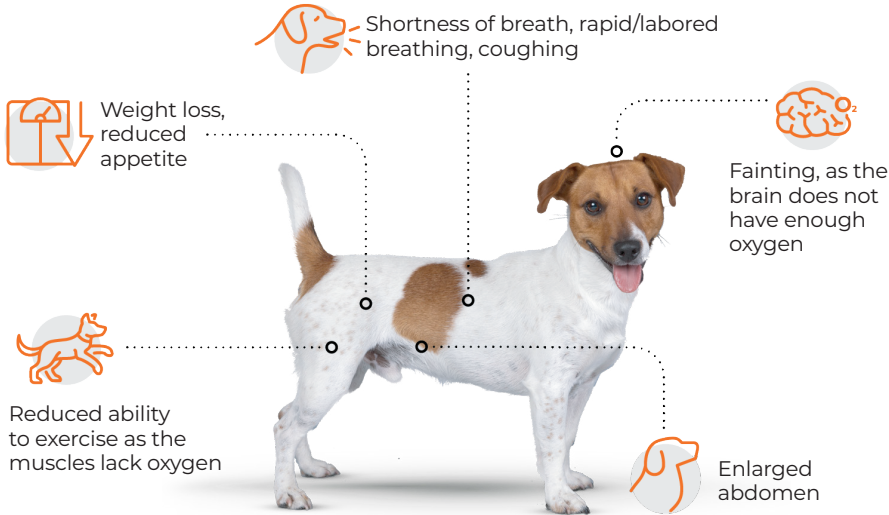


Cardalis
(spironolactone and benazepril hydrochloride chewable tablets)

Help your heart dog

What are the signs of heart failure?



Mitral Valve Disease and Heart Failure

A diseased mitral valve does not close properly. This allows blood to leak backward, in the wrong direction.

Mitral valve disease causes the heart to weaken. The weakened heart does not pump as efficiently.

This causes fluid to build up in the lungs. When a dog reaches this stage, "heart failure" has occurred.

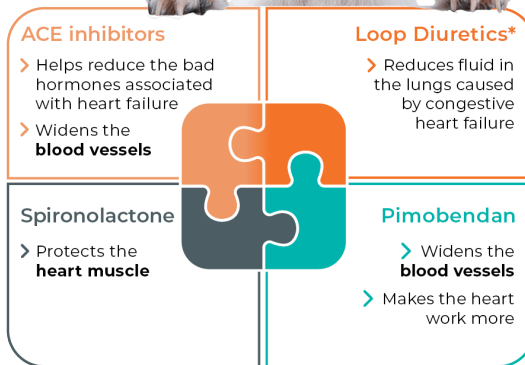
The most common cause of heart failure in dogs is mitral valve disease.



How to Manage Heart Failure

Heart failure management helps the heart work more efficiently.

Multiple medications are needed to reduce your dog's symptoms and manage the disease. CARDALIS™ provides half of the recommended 4 medications needed in congestive heart failure.



Important Safety Information: Do not administer in conjunction with non-steroidal anti-inflammatory drugs (NSAIDs) in dogs with renal insufficiency. Do not use in dogs with hypoadrenocorticism (Addison's disease), hyperkalemia or hyponatremia. Do not use in dogs with known hypersensitivity to ACE inhibitors or spironolactone. The safety and effectiveness of concurrent therapy of CARDALIS™ with pimobendan has not been evaluated. The safety of CARDALIS™ has not been evaluated in pregnant, lactating, breeding, or growing dogs. CARDALIS™ administration should begin after pulmonary edema is stabilized. Regular monitoring of renal function and serum potassium levels is recommended. Common side effects from a field study include anorexia, vomiting, lethargy, diarrhea, and renal insufficiency. For full prescribing information, visit www.cardalis.com.

Monitor your dog at home



Respiratory rate



The normal breathing rate during rest or sleep is usually around **20-30 breaths per minute**.

If this starts to increase, it may be a sign that the heart condition is worsening and veterinary advice is needed.



Scan this QR code to download the CARDALIS™ app and easily measure your pet's respiratory rate. Through the app, you can calculate the breaths per minute and share them with your veterinarian.



Follow the directions in the app to setup accounts to monitor all your heart dogs.



Caring for your heart dog at home



Avoid **intense physical effort**.



Beware of **excessive weight**. Obesity causes extra fatigue for the body and the heart.



Avoid **excessively salty** food. Excessively salty food contributes to the build up of fluid in the lungs.



Protect from **heat and stress**.



Provide access to **water** and frequent urination opportunities.

*Loop diuretics, like furosemide, will cause your dog to urinate and drink more.



© 2024 Ceva Animal Health, LLC
The CARDALIS™ logo is a registered trademark of Ceva Santé Animale S.A.
CARDALIS™ trademark is the property of Ceva Santé Animale S.A.
CRD-125-23v1

Cardalis®

(spironolactone and benazepril hydrochloride chewable tablets)

This summary contains important information about CARDALIS™.

Please speak with your veterinarian and read this information before starting your dog on this prescription medication.

What is CARDALIS™?

CARDALIS™ is a combination drug containing spironolactone and benazepril hydrochloride prescribed to manage the progression of signs associated with congestive heart failure in your dog.

It has been shown to be effective by having less worsening of clinical signs of congestive heart failure when benazepril hydrochloride is used alone.

CARDALIS™ provides an easy, palatable way to accomplish half of the recommended four medications for congestive heart failure.

CARDALIS™ should be administered with food.

How does CARDALIS™ Work?

CARDALIS™ is a prescription drug to manage the clinical signs associated with congestive heart failure in your dog.

CARDALIS™ will be prescribed for your dog in conjunction with another drug that reduces water retention.

The ingredient spironolactone blocks the mechanisms associated with retention of water and scarring of the heart.

The ingredient benazepril hydrochloride inhibits mechanisms associated with narrowing of blood vessels and heart damage.

What are the possible side effects that may occur with CARDALIS™?

The most common side effects were lack of appetite, vomiting, lethargy, diarrhea, and poor function of the kidneys.

If you suspect your dog is having side effects, contact your veterinarian.

What dogs should not take CARDALIS™?

Your veterinarian may not prescribe CARDALIS™ for your dog if it:

- Has kidney disease and is taking medication to control pain for conditions such as arthritis
- Has Addison's disease, high potassium or low sodium blood levels
- Has known sensitivities to the ingredients in CARDALIS™

What should I do if my dog ingests more CARDALIS™ than prescribed?

Call your veterinarian immediately.

What else should I know about CARDALIS™?

CARDALIS™ is not for use in humans.

You should store CARDALIS™ away from children and pets to prevent accidental ingestion and overdosing.

If CARDALIS™ is ingested by a person, please contact a physician.

CARDALIS™ should be stored at room temperature in the original container.