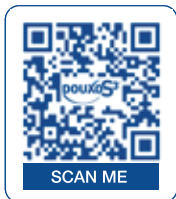




Learn more about the DOUXO® S3 routine.



Scan for how-to videos and exclusive content.

Healthy skin is possible with DOUXOS3®



Enjoy Allergy Season without the Itch



*Based on a survey of 400 veterinarians.

- 1 Gatellet M., Ahman S., Bruet V., Cadot P.M., Mueller R., Noli C., Nuttall T., Ollivier E., Blondel T., Savelli N. (2020). Performance of a combined application of Ophytrium-containing shampoo and mousse in dogs with sensitive skin: a European field trial. Vet Dermatol. 2020 31 (Suppl. 1): 37
- 2 Ollivier E., Ordeix L., Kesteman R., Blondel T., Zemirline C., Gatellet M., De Jaeger X (2021). Effect of a protocol combining applications of Ophytrium-based shampoo and mousse in dogs with sensitive, itchy and irritated skin - A European and US field trial. 15th UNISVET congress, Italy, February 25-28th.
- 3 Gatellet M., Kesteman R., Baulez B., Pradies F., Cadot P.M., Dropsy H., Fiora P., Mathet J.L., Ollivier E., Billy C., De Jaeger X. (2021). Performance of daily pads containing Ophytrium and chlorhexidine digluconate 3% in dogs with local cutaneous bacterial and/or Malassezia overgrowth. Front Vet Sci 8:579074.



Solutions for Itchy, Irritated Skin

#1 TOPICAL BRAND RECOMMENDED BY VETERINARIANS*

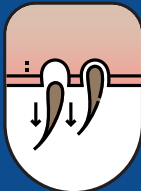
Understanding your Dog's Skin Allergies

Your dog's skin allergies may flare up seasonally. You may notice **more symptoms during spring and fall**. Common allergy symptoms may include:

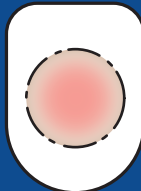
excessive licking, chewing, scratching or pawing



hair loss



skin redness or crusts



odor to the skin



DOUXO^{S3} CALM



Soothes itchy, irritated or allergic skin

Use **DOUXO[®] S3 CALM** during allergic skin flares.

Available in Shampoo and Mousse. **DOUXO[®] S3 CALM** soothes itchy skin as fast as 7 days.^{1,2}

Watch for Early Signs of Skin Infections

Excessive scratching, chewing and other allergy symptoms can damage the protective barrier of the skin, causing **skin allergies to evolve quickly into skin infections**. Keep an eye out for:

flaky, crusty, scaly, or red skin



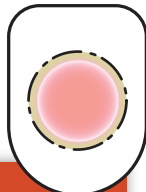
pimple-like pustules



change in odor



swelling, ulcerated or thickened skin



As soon as you notice these symptoms, reach out to your vet.

DOUXO^{S3} PYO



Antiseptic, antifungal for bacterial or yeast skin infections

Talk to your vet about using **DOUXO[®] S3 PYO** as part of your treatment plan when dogs' allergies have progressed to **skin infections**.

Available in Shampoo, Mousse and Pads. Helps reduce yeast and bacteria on pet's skin in just 1 week.³

Chlorhexidine can cause rare, but serious allergic reactions in humans. If you experience allergy symptoms, discontinue use immediately and seek medical treatment. Do not use DOUXO[®] S3 PYO mousse on cats. Do not use DOUXO[®] S3 PYO pads between the toes of cats.