

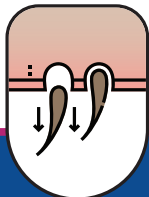
# Understanding your Dog's Skin Allergies

Your dog's skin allergies may flare up seasonally. You may notice more symptoms during spring and fall. Common allergy symptoms may include:

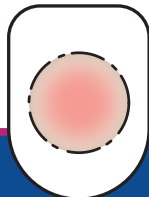
excessive licking, chewing, scratching or pawing



hair loss



skin redness or crusts



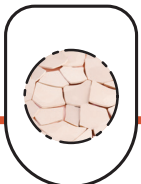
**DOUXOS<sup>3</sup>**  
CALM

Soothes itchy, irritated or allergic skin

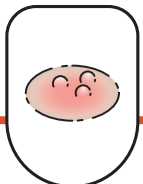
# Watch for Early Signs of Skin Infections

Excessive scratching, chewing and other allergy symptoms can damage the protective barrier of the skin, causing skin allergies to evolve quickly into skin infections. Keep an eye out for:

flaky, crusty, scaly, or red skin



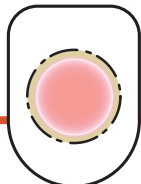
pimple-like pustules



change in odor



swelling, ulcerated or thickened skin



**DOUXOS<sup>3</sup>**  
PYO

Antiseptic, hydrating for bacterial or yeast skin infections

Ask your vet about

**DOUXOS<sup>3</sup>**



SCAN ME

Learn more about the DOUXO<sup>®</sup> S3 Routine.

**#1** TOPICAL BRAND RECOMMENDED BY VETERINARIANS\*



\*Based on a survey of 400 veterinarians.

\*\* Chlorhexidine can cause rare, but serious allergic reactions in humans. If you experience allergy symptoms, discontinue use immediately and seek medical treatment. Do not use DOUXO<sup>®</sup> S3 PYO mousse on cats. Do not use DOUXO<sup>®</sup> S3 PYO pads between the toes of cats.

LIT-DOU-241-26v1 | ©2026 Ceva Animal Health, LLC. DOUXO and DOUXO S3 Logo are registered trademarks of Ceva Santé Animale S.A.